

From the makers of Samsung™ Cash Registers

SAM4S

SAMSUNG

ELECTRONICS

SAMSUNG



Add an **SRP-270A Kitchen Printer** to your ER-380M

SAMSUNG



Add an **SRP-350 Thermal Bill Printer** to your ER-380M

Metrologic



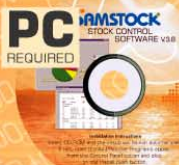
Add a **Voyager Bar Code Scanner** to your ER-380M

PC
REQUIRED



Add a **Modem** to your ER-380M for remote PC. comms

PC
REQUIRED



Add **Samstock Stock Control Software** to your PC.

PC
REQUIRED



PC Utility available for the ER-380M

**COMPATIBLE PERIPHERALS
AND STOCK CONTROL SOFTWARE.**

ER-380M

- **Low cost cash register!**
- **Thermal printer, with drop and print paper loading!**
- **No paper jams!**
- **No ink ribbons or rollers!**

If you need a simple, quick, quiet and economical cash register then the ER-380M fits the bill.

If you want a low cost cash register that will grow with your business then the ER-380M is the cash register for you. Want to start with simple operation and then upgrade to bar code scanning later,

No Problem!

The Metrologic Orbit Scanner is not included. For illustrative purposes only.



SAMSTOCK

Spares for ER-380M

Part No.	Item
57*57T	Thermal Till Roll
0022	Wet Cover
0037	Drawer Base
0038	Drawer Insert



Raised keyboard provides read and point operation



2 Line Operator Display and 10 Digit VFD Customer Display



57mm Wide Thermal Receipt from Single Station Clam Shell Printer



The cash drawer has four notes and eight coin compartments



PC Utility available for the ER-380M

OPTIONAL PERIPHERALS & UTILITY/SOFTWARE



- SRP-270 Dot Matrix Kitchen Printer
- SRP-350 Thermal Printer
- High Speed Modem

- Bar Code Scanners
- Programming Utility Software
- Samstock Stock Control Software



SPECIFICATION ER-380M

DEPARTMENTS	12
PLU's	300
GROUPS	20
ELECTRONIC JOURNAL (DEFAULT)	3000 Lines
DESCRIPTORS	18 Character
CLERKS	15
BUFFER RECEIPT	Yes
TRAINING MODE	Yes
RECEIPT PRE-AMBLE/POST-AMBLE	6 Lines Each
KP OPERATION	Yes
TENDERING	Cash/Cheque/Charge 8
CURRENCY CONVERSION	4 including Euro
DECIMAL POINT	7 Digits
GRAPHIC LOGO PRINTING	Yes 8 Lines
PRINTER	Type Speed Paper Width
	Single Station Clam Shell Thermal 13.3 Lines Per Sec 57mm
KEYBOARD DISPLAY	Operator Customer
	2 Line Alpha Numeric LCD 10 Digit VFD
MEMORY	ROM RAM
	4mbit 1 Mbit (Default) 4 Mbit (Option)
MEMORY PROTECTION BATTERY	60 Days
INTERFACE/COMMUNICATION	2 X RS-232
POWER REQUIREMENT	230v/50hz
POWER CONSUMPTION	Reg (25w)
DRAWER	4 Note & 8 Coin Compartments
ENVIRONMENT TEMPERATURE	32°F ~ 104°F (0°C ~ 40°C)
CONDITION/HUMIDITY	30% ~ 80% Rh
DIMENSION	Register Drawer
	400 X 450 X 266 400 X 450 X 112
WEIGHT	13.0 Kg

TYPICAL MEMORY ALLOCATION WITH 1 RAM CHIP

• PLU	5000
• CLERKS	99
• GROUPS	99
• CHECKS	500
• LINES PER CHECK	100
• LEVELS	2 prices/5 modifiers
• MIX & MATCH	99
• ELECTRONIC JOURNAL	7000

TYPICAL MEMORY ALLOCATION WITH NO RAM CHIP

• PLU	300
• CLERKS	10
• GROUPS	20
• CHECKS	15
• LINES PER CHECK	30
• LEVELS	1
• MIX & MATCH	10
• ELECTRONIC JOURNAL (Default)	3000

Distributed by:

SAM4s

